

# Event Timeline

**January**

Teachers receive books and information packet.

**March 18**

Teachers send student book choices to Lynda Robinson via district mail or fax.

**April 4**

Teachers send booksets to Gift of Literacy via district mail.

**April 18**

Teachers send an up-to-date class roster and a groups list to Lynda Robinson via district mail or fax.\*

\*It is important that we receive the class roster by this date so that we can print and insert bookplates. We realize there will be last-minute additions; please let Lynda Robinson know as soon as you get a new student.

**Week of May 9**

The Instruction Dept. distributes final information packet with reminders about lunches, nametags and signage, as well as group numbers and final transportation schedule, to teachers via district mail.

**June 2**

Gift of Literacy event at LCC



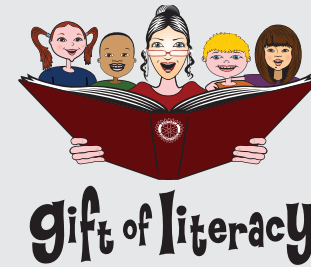
For More Information:  
[www.giftofliteracy.org](http://www.giftofliteracy.org)

For questions about book assignments, class rosters and student groups contact:

Lynda Robinson  
726.3303  
726.3316 (fax)  
[lrobinso@sps.lane.edu](mailto:lrobinso@sps.lane.edu)

For event or program questions contact:

Brittany Kronholm  
726.3220  
[brittany.kronholm@sps.lane.edu](mailto:brittany.kronholm@sps.lane.edu)



The Gift of Literacy is a program of:

**Rotary Clubs of Springfield**

- Springfield Rotary
- Twin Rivers Rotary

**TEAM Springfield**

- City of Springfield
- Springfield Public Schools
- Springfield Utility Board
- Willamalane Park & Recreation District

**The 2010 Gift of Literacy was sponsored by:**

- Springfield Education Foundation
- Lane Community College
- Cressey Family Charitable Trust
- First Tech Credit Union
- Comcast
- SELCO Community Credit Union
- Weyerhaeuser
- PacificSource Health Plans
- The Register-Guard
- Oregon Community Credit Union
- Wildish Lane Co.

**Gift of Literacy books are provided at a discounted rate by:**

- Scholastic Book Fairs
- UO Bookstore

Dear First-Grade Teacher,

Welcome to the start of the 2011 Gift of Literacy program. This year's celebration will take place **June 2nd at Lane Community College**. The 2010 program was a great success! Thank you for all of your feedback and suggestions. Each year we are able to offer our students a more memorable experience with your help.

Gift of Literacy aspires to show our students how important literacy and life-long learning is to this community. The program exposes our youngest students to a variety of children's books and donates these books throughout the community. Research indicates that literacy must be encouraged and reinforced by many people and in many ways at a young age.

The program began in the fall of 2005 when the Rotary Clubs of Springfield collaborated with the school district to develop a book giving program. Now, in its sixth year, the Gift of Literacy has over a dozen sponsors and program partners who donate monetary and in-kind resources to make this annual program possible.

During the next few weeks, we ask you to read these ten books aloud to your students and let them choose their favorite. On June 2nd every first-grade student will receive his or her favorite hardbound book and a reusable backpack at the literacy celebration.

There are three main parts of the Gift of Literacy celebration. In the **Kick-Off** Activity students will enter the LCC Lecture Hall and sit down in their assigned seating location. Volunteers and group leaders will give each student his or her book and backpack. A guest presenter will lead a story activity with the entire group of students. After the kick-off activity, students will walk in groups with their chaperone to the **Small Group Reading** area in Building 19 of the Center for Meeting and Learning, where they will have books read aloud to them in small groups by local community leaders. After the small group reading, students will transition to **lunch** in the same building and have a chance to meet favorite characters. Lunch will also be provided to all teachers and volunteers.

This packet contains the majority of information about the program and the end-of-the-year celebration. It is intended to be a one-stop reference guide to the 2011 Gift of Literacy; however, more details and logistics will be mailed to you as the day of the event draws nearer.

We look forward to working with you on this great program. Please contact us with questions or concerns.

Thanks,

Jeff DeFranco  
Director of Communications & Facilities  
541.726.3204  
[jeff.defranco@sps.lane.edu](mailto:jeff.defranco@sps.lane.edu)

**THIS YEAR'S EXCITING BOOK CHOICES**





## Instructions for Reading and Choosing Books

The classroom set of ten books accompanies this packet. Each class will receive one copy of the following books: *Winter's Tail*; *A Couple of Boys Have the Best Week Ever*; *Sonia Sotomayor*; *The Pencil*; *Testing the Ice*; *Henry & the Crazy Chicken Pirates*; *Red Sings from Treetops*; *Big Chickens*; *The Perfect Gift*; and *Widget*.

- During the next weeks, teachers should read each of these books to their students at least once or twice and make the books available for students to access individually.
- It's our expectation that teachers will show students all of the books and explain the program to them.
- At the end of the next few weeks students will have the opportunity to choose their favorite book. The spirit of the program is not just about literacy, but also fostering ownership and making choices.
- On a class roster, please write down the appropriate book title for each student and send a hard copy of the list via district mail or fax to Lynda Robinson in the Admin. Complex no later than **March 18th**. Please return your books via district mail to the Gift of Literacy program no later than **April 4th**.
- Please try to keep the books in good condition because they will be redistributed to school and public libraries throughout our community.

### Groups/Chaperones:

For the Gift of Literacy celebration you will need to divide students into groups of 7-10 children. Each group should have a chaperone, either a

parent volunteer or an additional school staff member. Closer to the Gift of Literacy celebration, a specific number (e.g.: 1-100) will be assigned to each group so that we can coordinate all kids.

**Bag of Tricks:** Please bring a medical fanny pack and come with a "bag of tricks" to aid in transitions.

**Name Tags:** Please ensure that all students have name tags with their first and last name, school and teacher.

**Photo Permission:** There will be a Gift of Literacy photographer, videographer and media at the event, so if you have students who are unable to be photographed, please place a red dot sticker on their name tag so that we can identify them. If you are unsure which students cannot be photographed, please check with your school secretary.

**Classroom Sign:** Please prepare a sign for each of your groups to help us identify groups and classrooms in a crowd. Feel free to keep the signs simple, but make sure they have the following information: school name, teacher's name, assigned group number.

**Lunch:** A quality lunch will be provided for all students at no cost to them or their families. This process will make it easier on your staff, facilitate clean-up and create consistency in the lunch process. Lunch will include: \*

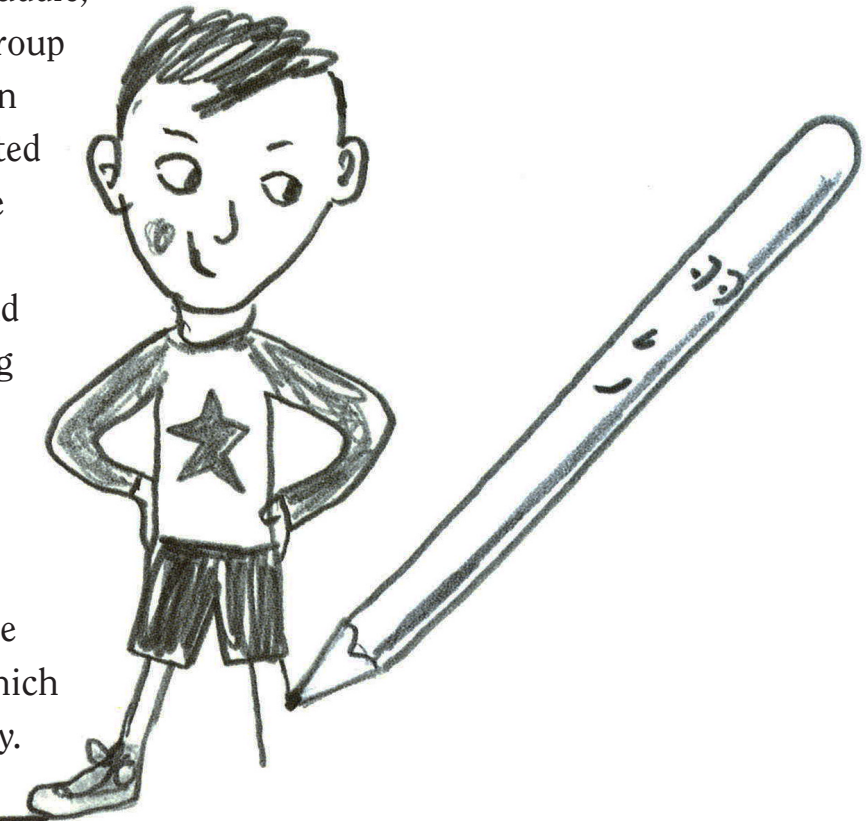
- Turkey and cheese sandwich on white bread with enriched wheat
- Baby carrots
- Apple or banana
- Rice Krispie treat
- Milk or Juice

*\*If a student has severe allergies or dietary restrictions, the parent can coordinate with the school principal to bring an appropriate lunch.*

**Adult lunch will be provided to all teachers and volunteers.**

The schools will be divided into three groups of 270-300 students per group.

This division helps us stagger the event and the transportation system more effectively. Your school will be placed in one of three groups, each with a famous character as their mascot: Toot & Puddle, Clifford or Skippyjon Jones. Each group will be greeted by their mascot when they arrive at LCC and will be directed to the kick-off activity. Please advise parent volunteers that mascots are there to keep the groups moving and that students should not stop to hug or talk to the characters. There will be time to meet the mascots at the kick-off activity and after lunch.



Below are the schedules for all three groups. We will notify you about which group your school is in by early May.

## Transportation & Event Schedule

Toot & Puddle									
Pick up at school	Buses arrive at LCC	Kick-off activity	Transition	Small group reading	Transition	Lunch	Leave Building	Buses leave LCC	Arrive back at school
Varies	9:50	10:00	10:30	10:40	11:05	11:10	11:35	11:45	Varies

Clifford Group									
Pick up at school	Buses arrive at LCC	Kick-off activity	Transition	Small group reading	Transition	Lunch	Leave Building	Buses leave LCC	Arrive back at school
Varies	10:40	10:50	11:20	11:30	11:55	12:00	12:25	12:30	Varies

Skippyjon Jones									
Pick up at school	Buses arrive at LCC	Kick-off activity	Transition	Small group reading	Transition	Lunch	Leave Building	Buses leave LCC	Arrive back at school
Varies	11:30	11:40	12:10	12:20	12:45	12:50	1:15	1:25	Varies